

---

Wireless Hi Sensitivity Receiver Module (RF ASK)

---

**Version History**

Version	Date	Changes
V1.00	May.25, 2012	1 <sup>st</sup> . Edition

Model: RWS-371F-6 (433.92MHz)

- Frequency Range: 433.92MHz
- Modulate Mode: ASK
- Circuit Shape: LC
- Data Rate: 4800 bps
- Selectivity: -108 dBm
- Channel Spacing:  $\pm 500$ KHz
- Supply Voltage: 3.8~5.5V
- High sensitivity passive design.
- Simple to apply with low external count.

#### Electrical Characteristic

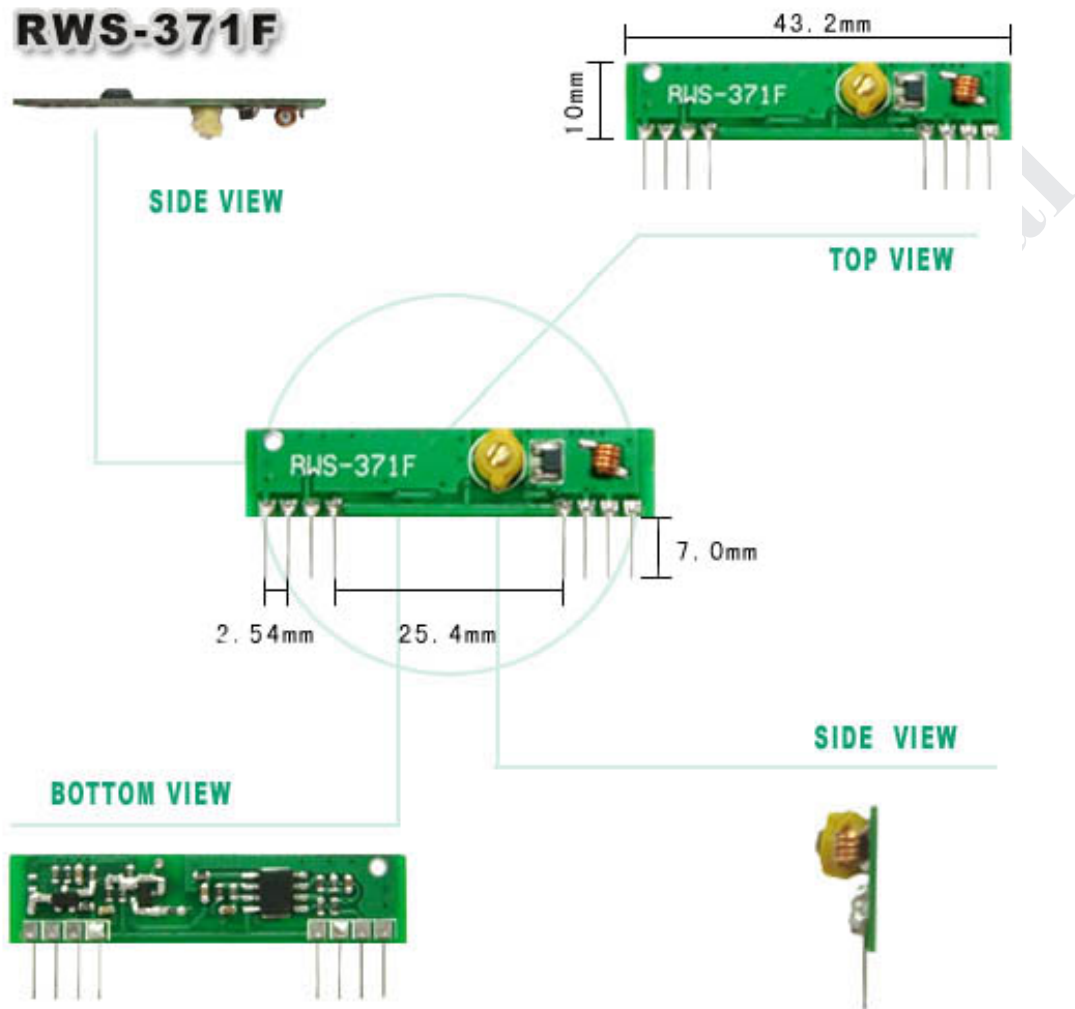
Characteristic	Sym	Min	Type	Max	Unit
Operating Radio Frequency	FC	433.42	433.92	434.42	MHz
Sensitivity	Pref.	-106	-108	-110	dBm
Channel Width		-500		+ 500	KHz
Noise Equivalent BW	NEB		5	4	
Baseband Data Rate				3	KB/S
Receiver Turn On Time				3	ms

#### DC Characteristic

Symbol	Parameter	Conditions	Min	Type	Max	Unit
Vcc	Operating Supply Voltage		3.8	5	5.5	
I Tot	Operating Supply Voltage			4.5		
V Data	Data Out	1 Data = +200uA ( High )	Vcc -0.5	Vcc		V
		1 Data = -10uA ( Low )			0.3	V

Size

(unit : mm)



#### Pin Assignment

Pin	Function
1	GND
2	Digital Output
3	Linear Out
4	VCC
5	VCC
6	GND
7	GND
8	ANT(About 13cm)



## Demo Circuit

