

---

Wireless Hi Sensitivity Receiver Module (RF ASK)

---



#### Version History

| Version | Date         | Changes                   |
|---------|--------------|---------------------------|
| V1.00   | May.25, 2012 | 1 <sup>st</sup> . Edition |

**Model: RWS-371F-3 (315MHz)**

- Frequency Range: 315MHz
- Modulate Mode: ASK
- Circuit Shape: LC
- Data Rate: 4800 bps
- Selectivity: -108 dBm
- Channel Spacing:  $\pm 500\text{KHz}$
- Supply Voltage: 3.8~5.5V
- High sensitivity passive design.
- Simple to apply with low external count.

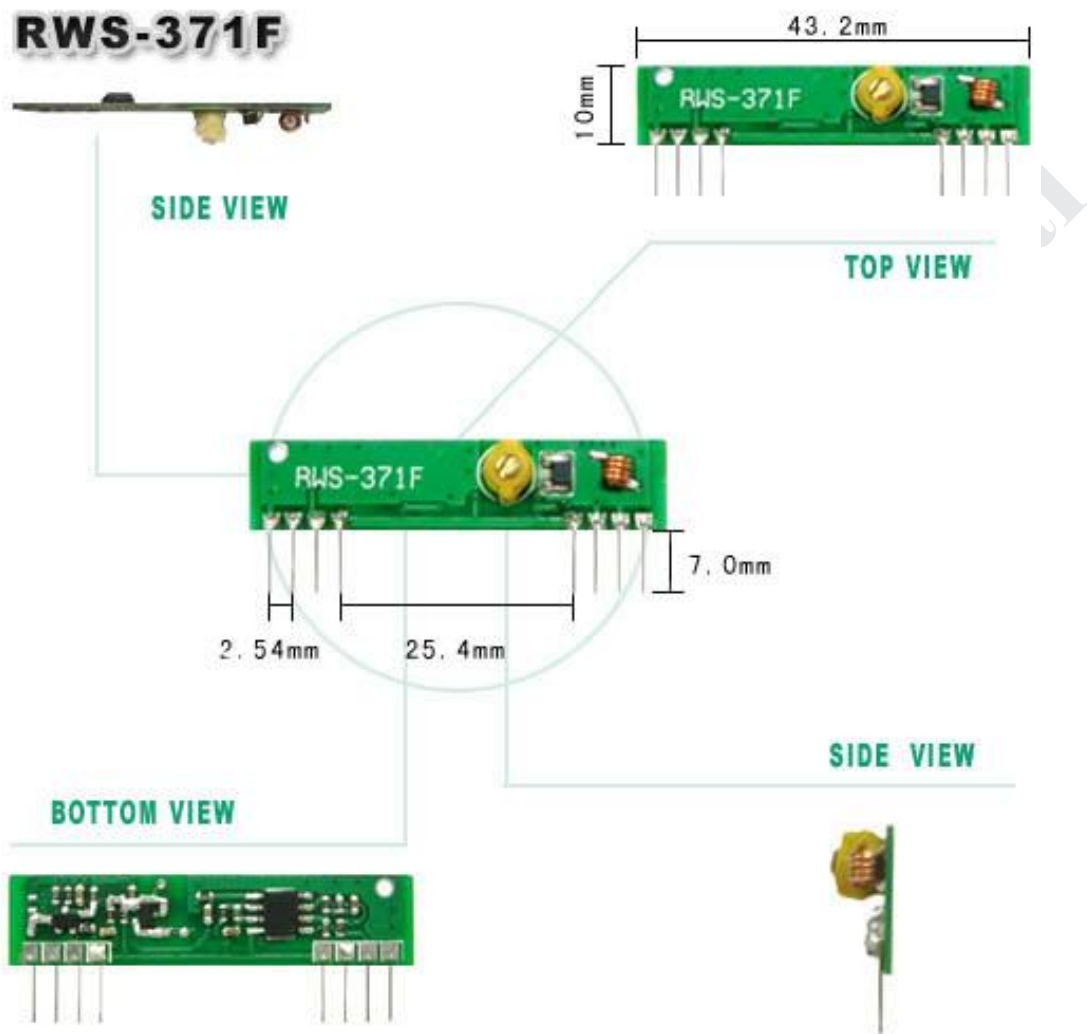
**Electrical Characteristic**

| Characteristic            | Sym   | Min   | Type | Max   | Unit |
|---------------------------|-------|-------|------|-------|------|
| Operating Radio Frequency | FC    | 314.5 | 315  | 315.5 | MHz  |
| Sensitivity               | Pref. | -106  | -108 | -110  | dBm  |
| Channel Width             |       | -500  |      | + 500 | KHz  |
| Noise Equivalent BW       | NEB   |       | 5    | 4     |      |
| Baseband Data Rate        |       |       |      | 3     | KB/S |
| Receiver Turn On Time     |       |       |      | 3     | ms   |

**DC Characteristic**

| Symbol | Parameter                | Conditions               | Min      | Type | Max | Unit |
|--------|--------------------------|--------------------------|----------|------|-----|------|
| Vcc    | Operating Supply Voltage |                          | 3.8      | 5    | 5.5 | V    |
| I Tot  | Operating Supply Voltage |                          |          | 4.5  |     |      |
| V Data | Data Out                 | 1 Data = +200uA ( High ) | Vcc -0.5 | Vcc  |     | V    |
|        |                          | 1 Data = -10uA ( Low )   |          |      | 0.3 | V    |

## Pin Assignment



## Demo Circuit

| Pin | Function        |
|-----|-----------------|
| 1   | GND             |
| 2   | Digital Output  |
| 3   | Linear Out      |
| 4   | VCC             |
| 5   | VCC             |
| 6   | GND             |
| 7   | GND             |
| 8   | ANT(About 13cm) |



<http://www.wenshing.com.tw> ; <http://www.rf.net.tw>

